



汽油机零部件图册

PART CATALOGUE

LC1P61FA

LC1P70FA

LC1P65FA

LC1P70F

LC1P68FA



版本号**VERSION No.:** 2011-01

隆鑫通用动力股份有限公司

LONCIN MOTOR CO.,LTD.

零件目录使用说明(Instruction for use of parts catalogue)

本零件目录是根据2010年8月所能得到的最新资料编制而成的。

This parts catalogue was prepared based on the latest information available as of May 2010.

请注意2010年8月以后本零部件目录的修订通知。

See the parts catalogue news for any revision that is made after May 2010.

当订购零件时，一定要明确指出其零件编号。

Always specify the part number when ordering a part.

注意本零件目录所给出的图形可能与实际零件外形有所不同。

Note that the illustrations can differ from the actual parts in shape.

当需要对零部件目录的内容进行更改或增加时，本公司将在适当的时间出版修订版，为保证在任何时候都可以使用到最新版本的

When modifications or additions to this parts catalogue are made , a revised edition will be issued at an

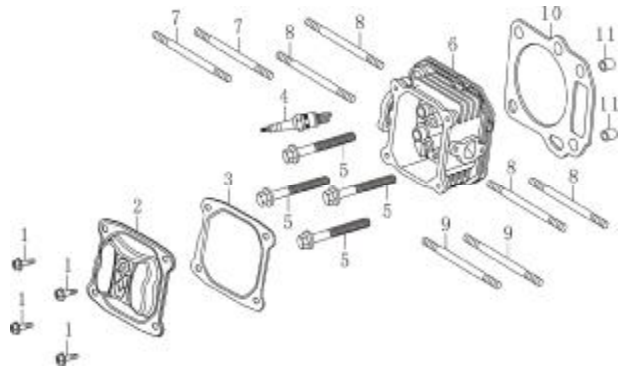
示例 (Example)

曲轴箱 (Crankcase)								
序号 No.	零部件件号 Part No.	零部件名称	Description	数量 (Reqd. QTY.)				
				1P61FA	1P65FA	1P68FA	1P70FA	1P70F
1	110810053-0001	曲轴箱体	CRANK CASE	1	/	/	/	/

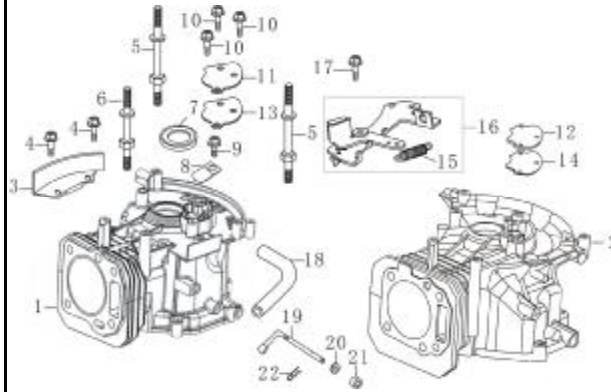
注 (Note) : 表示LC1P61FA有1个[1 means LC1P61FA has 1 QTY]

“/”表示LC1P65FA、1P68FA、LC1P70FA、1P70F没有[“/” means require 0 QTY]

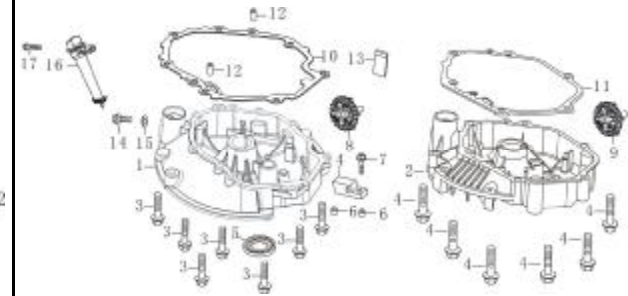
气缸头 (Cylinder head)



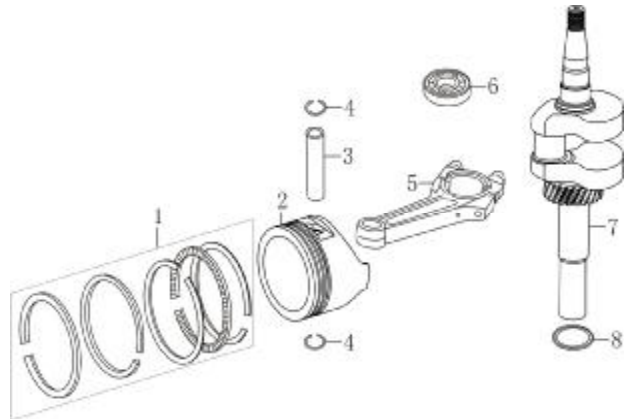
曲轴箱 (Crankcase)



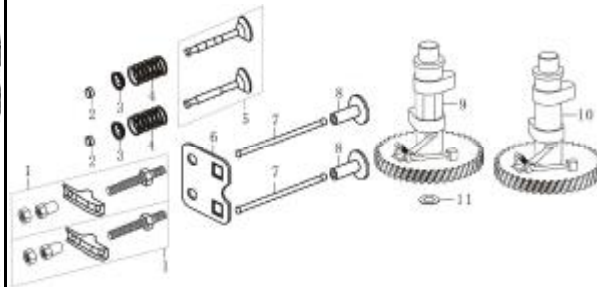
曲轴箱盖 (Crankcase cover)



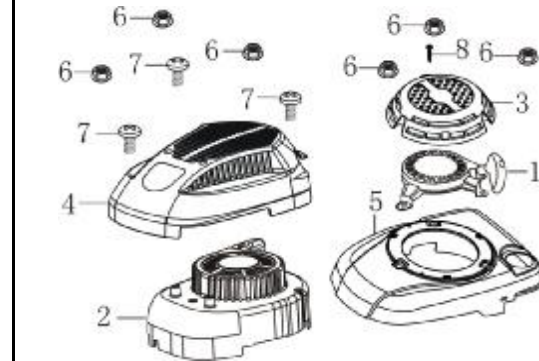
活塞连杆曲轴
(Crankshaft/Piston/connecting rod)



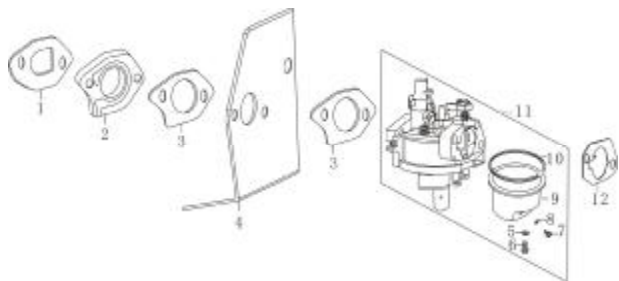
配气机构 (Camshaft)



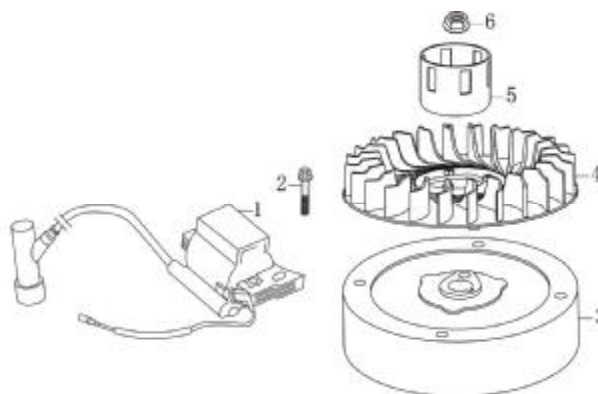
起动器 (Starter)



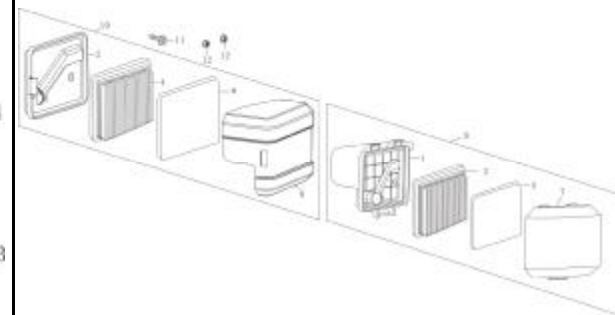
化油器 (Carburetor)



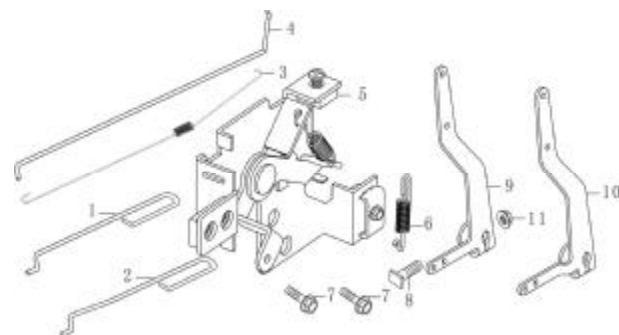
飞轮 点火器 (Flywheel/Ignition Comp)



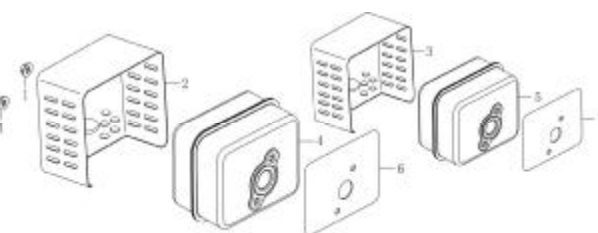
空滤器 (Air cleaner)



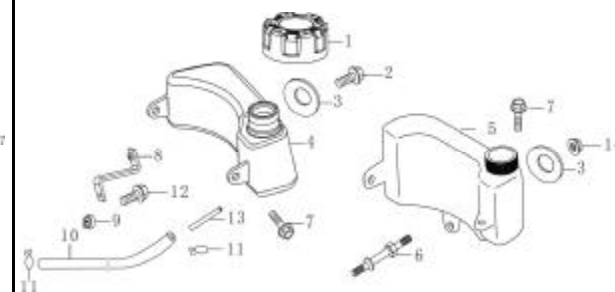
调速控制 (Control)

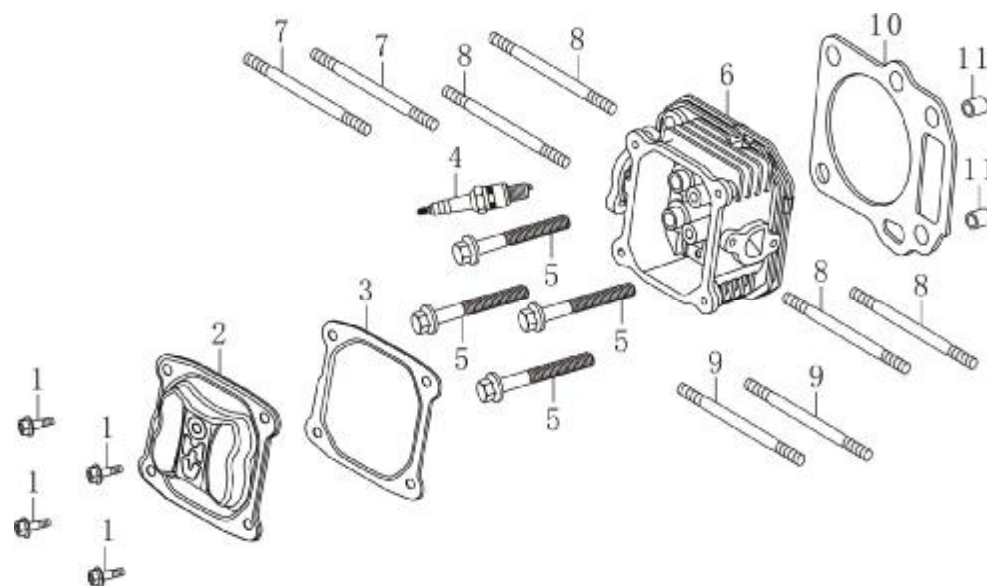


消声器 (Muffler)



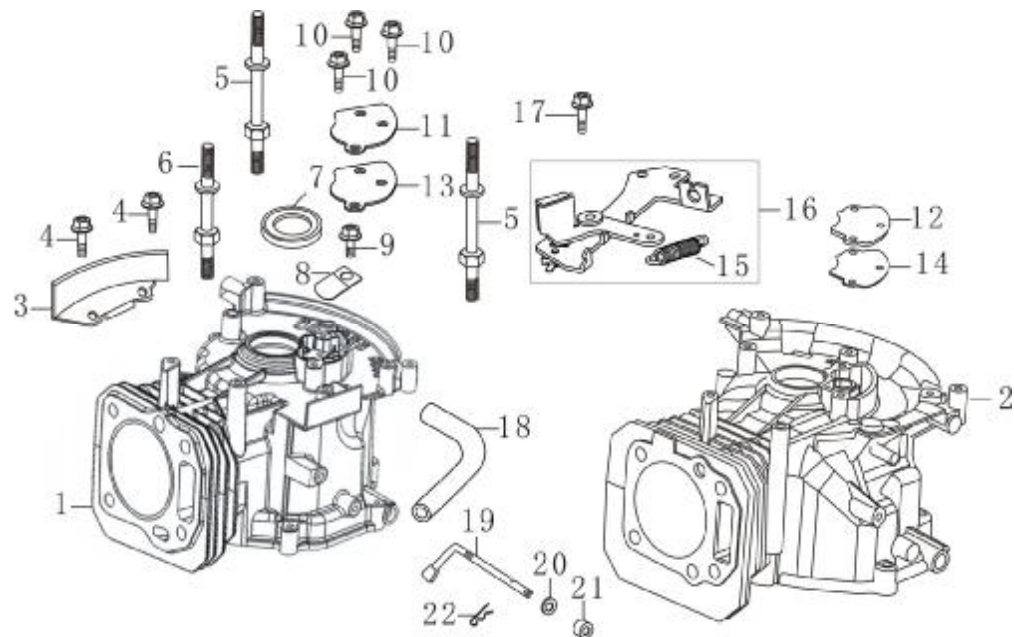
油箱 (Fuel tank)





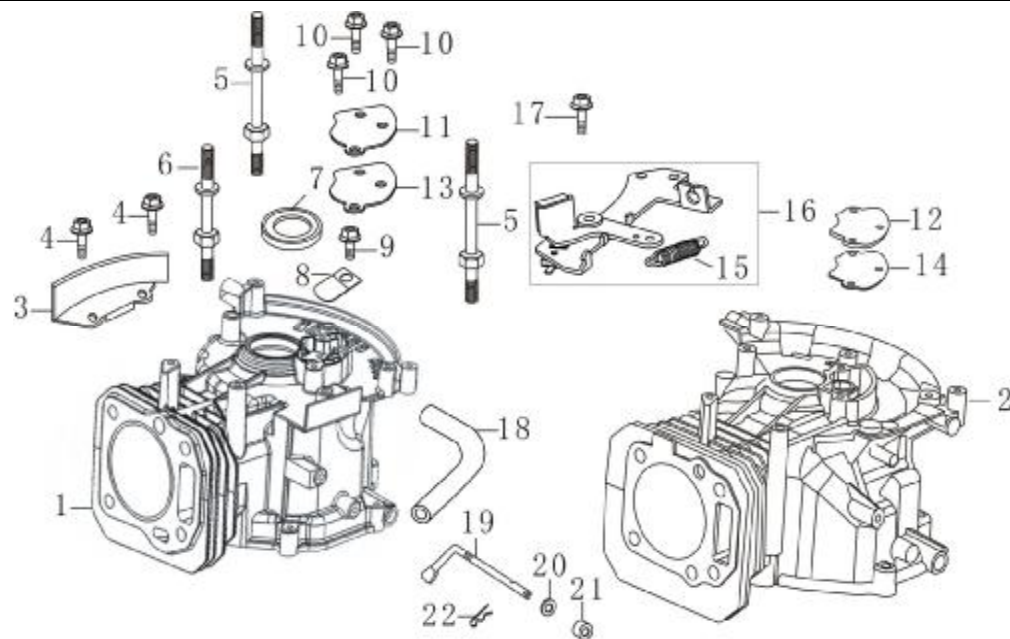
气缸头 (Cylinder head)

序号 No.	零部件件号 Part No.	零部件名称	Description	数量 (Reqd. QTY.)				
				1P61FA	1P65FA	1P68FA	1P70FA	1P70F
1	380020070-0001	六角头轴肩螺栓	HEXAGON SHOULDER BOLT	4	4	4	4	4
2	120230083-0001	气缸头盖	COVER COMP. HEAD	1	1	1	1	1
3	120250032-0001	气缸头盖密封垫	PACKING, HEAD COVER	1	1	1	1	1
4	270960025-0001	火花塞 F7TC	PLUG, SPARK F7TC	1	1	1	1	1
5	380140339-0001	六角头法兰面螺栓 M8*50	BOLT, CONNECTING, ROD M8*50	4	4	/	/	/
	380140338-0001	六角头法兰面螺栓 M8*55	BOLT, CONNECTING, ROD M8*55	/	/	4	4	4
6	120080288-0001	气缸头	HEAD COMP, CYLINDER	1	1	/	/	/
	120080279-0001	气缸头	HEAD COMP, CYLINDER	/	/	1	1	1
7	380180114-0001	双头螺栓 M6*89	BOLT, STUD M6*89	2	2	/	/	/
8	380180101-0001	双头螺栓 M6*95	BOLT, STUD M6*95	2	2	2	2	2
9	380180089-0001	双头螺栓 M6*103	BOLT, STUD M6*103	/	/	2	2	2
10	120150089-0001	气缸头密封垫	GASKET, CYLINDER	1	/	/	/	/
	120150086-0001	气缸头密封垫	GASKET, CYLINDER	/	1	/	/	/
	120150088-0001	气缸头密封垫	GASKET, CYLINDER	/	/	1	/	/



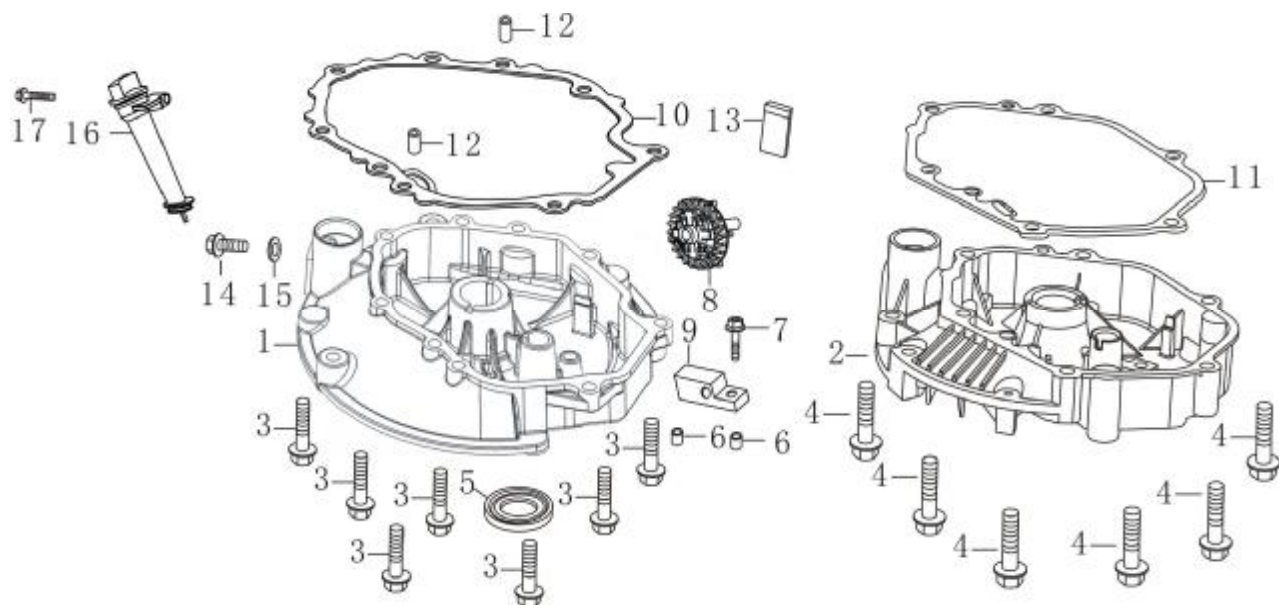
曲轴箱 (Crankcase)

序号 No.	零部件件号 Part No.	零部件名称	Description	数量 (Reqd. QTY.)				
				1P61FA	1P65FA	1P68FA	1P70FA	1P70F
1	110810143-0001	曲轴箱体	CRANK CASE	1	/	/	/	/
	110810149-0001	曲轴箱体	CRANK CASE	/	1	/	/	/
2	110810032-0001	曲轴箱体	CRANK CASE	/	/	1	/	/
	110810031-0001	曲轴箱体	CRANK CASE	/	/	/	1	/
	110810122-0001	曲轴箱体	CRANK CASE	/	/	/	/	1
3	160200032-0001	发动机导流罩	SHIELD, TANK SIDE	1	1	1	1	1
4	380140013-0005	六角头法兰面螺栓 M6*16	BOLT, FLANGE M6*16	2	2	2	2	2
5	380850006-0001	双头支撑螺栓 6*85	BOLT, STUD 6*85	2	2	2	2	2
6	380850002-0001	双头支撑螺栓 6*78.5	BOLT, STUD 6*78.5	1	1	1	1	1
7	380650335-0001	油封 25*38*7	OIL SEAL 25*38*7	1	1	1	1	1
8	140250006-0001	簧片阀	REED VALVE	1	1	1	1	1
9	380140011-0004	六角头法兰面螺栓 M6*10	BOLT, FLANGE M6*10	1	1	1	1	1
10	380140441-0001	六角头法兰面螺栓 M6*14	BOLT, FLANGE M6*14	3	3	3	3	3



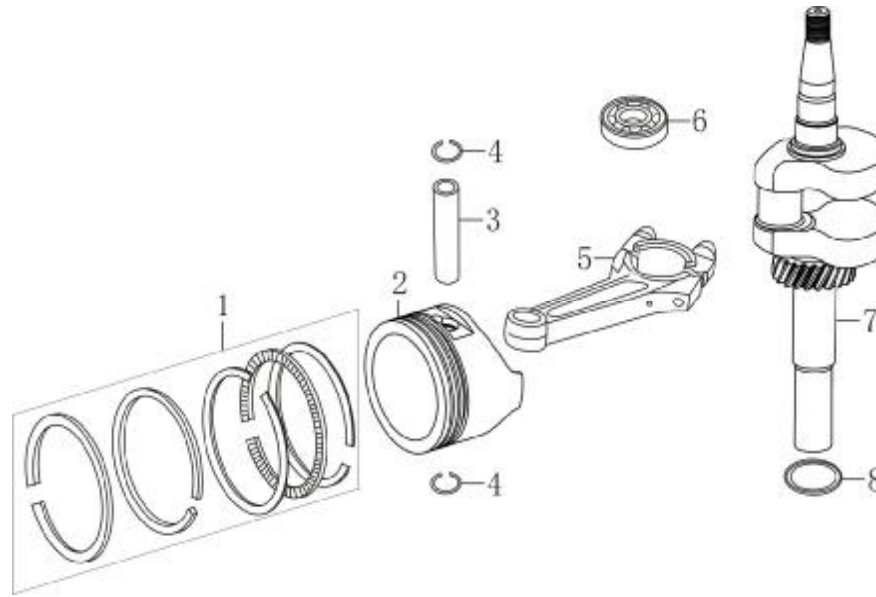
曲轴箱 (Crankcase)

序号 No.	零部件件号 Part No.	零部件名称	Description	数量 (Reqd. QTY.)				
				1P61FA	1P65FA	1P68FA	1P70FA	1P70F
11	110840010-0001	呼吸槽盖板	CAP, BREATHER CHAMBER	1	1	/	/	/
12	110840011-0001	呼吸槽盖板	CAP, BREATHER CHAMBER	/	/	1	1	1
13	110850010-0001	呼吸槽密封垫	PACKING, BREATHER CHAMBER	1	1	/	/	/
14	110850011-0001	呼吸槽密封垫	PACKING, BREATHER CHAMBER	/	/	1	1	1
15	381140388-0001	制动器弹簧	SPRING, IDLE CONTROLLER	1	1	1	1	1
16	293030005-0001	发动机制动器	FLYWHEEL BRAKE	1	1	1	1	1
17	380140086-0002	六角头法兰面螺栓 M6*22	BOLT, FLANGE M6*22	1	1	1	1	1
18	380740522-0001	通气管	TUBE, BREATHER	1	1	/	/	/
	380740565-0001	通气管	TUBE, BREATHER	/	/	1	1	/
	380740574-0001	通气管	TUBE, BREATHER	/	/	/	/	1
19	171630010-0001	调速臂	SHAFT, GOVERNOR ARM	1	1	1	1	1



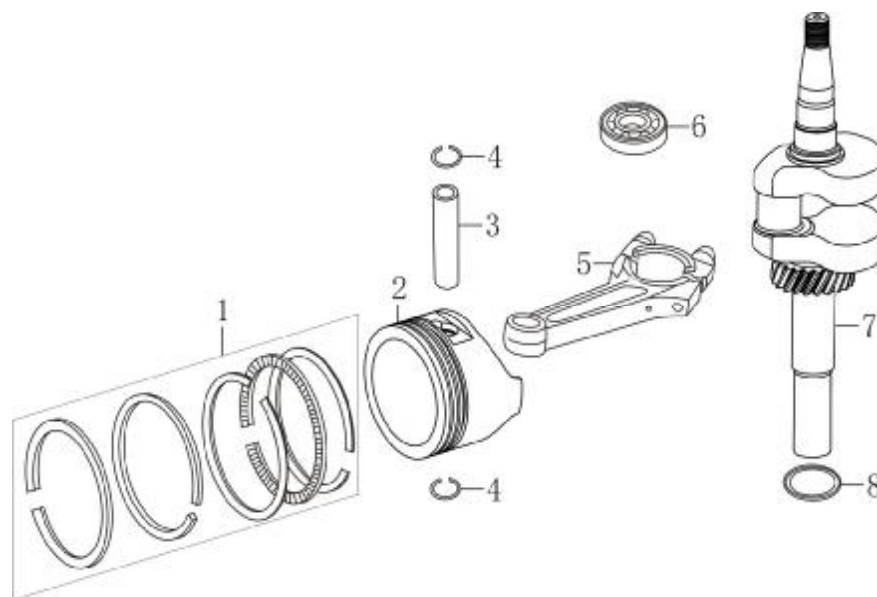
曲轴箱盖 (Crankcase cover)

序号 No.	零部件件号 Part No.	零部件名称	Description	数量 (Reqd. QTY.)				
				1P61FA	1P65FA	1P68FA	1P70FA	1P70F
1	110820038-0001	曲轴箱盖	CASE COVER	1	1	/	/	/
2	110820026-0001	曲轴箱盖	CASE COVER	/	/	1	1	/
	110820019-0001	曲轴箱盖	CASE COVER	/	/	/	/	1
3	380140024-0006	六角头法兰面螺栓 M6*28	BOLT, FLANGE M6*28	7	7	/	/	/
4	380140148-0005	六角头法兰面螺栓 M8*50	BOLT, FLANGE M8*50	/	/	6	6	6
5	380650347-0001	油封25*41.25*6	OIL SEAL	1	1	1	1	1
6	380600121-0001	定位销 8*10	PIN, DOWEL 8*10	2	2	2	2	2
7	380140077-0005	六角头法兰面螺栓 M6*20	BOLT, FLANGE M6*20	1	1	1	1	1
8	171750013-0001	调速齿轮部件	GOVERNOR COMP	1	1	1	1	1
9	171640003-0001	调速齿轮压板	GOVERNOR ASSY	1	1	1	1	1
10	110830039-0001	曲轴箱盖密封垫	PACKING, CASE COVER	1	1	/	/	/
11	110830040-0001	曲轴箱盖密封垫	PACKING, CASE COVER	/	/	1	1	1
12	380600120-0001	定位销 8*14	PIN, DOWEL 8*14	2	2	2	2	2



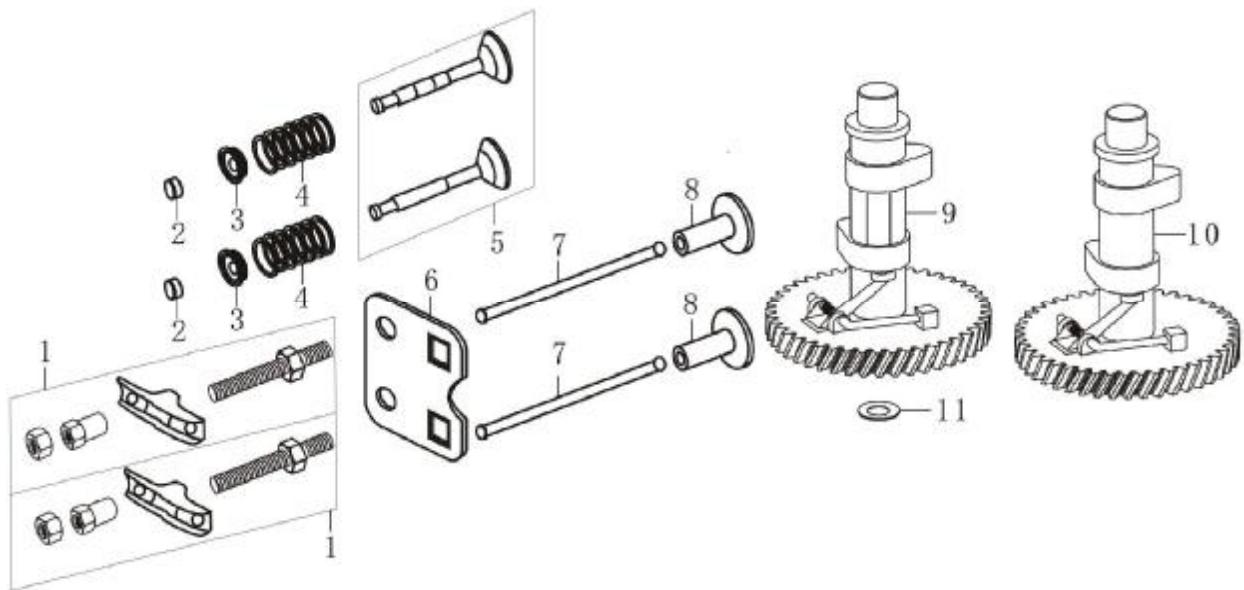
活塞连杆曲轴 (Crankshaft/Piston/connecting rod)

序号 No.	零部件件号 Part No.	零部件名称	Description	数量 (Reqd. QTY.)				
				1P61FA	1P65FA	1P68FA	1P70FA	1P70F
1	130070098-0001	活塞环组合	RING SET	1	/	/	/	/
	130070085-0001	活塞环组合	RING SET	/	1	/	/	/
	130070079-0001	活塞环组合	RING SET	/	/	1	/	/
	130070142-0001	活塞环组合	RING SET	/	/	/	1	1
2	130030106-0001	活塞	PISTON	1	/	/	/	/
	130030092-0001	活塞	PISTON	/	1	/	/	/
	130030083-0001	活塞	PISTON	/	/	1	/	/
	130030160-0001	活塞	PISTON	/	/	/	1	1
3	130060030-0001	活塞销	PIN. PISTON	1	1	/	/	/
	130060031-0001	活塞销	PIN. PISTON	/	/	1	1	1
4	380560055-0001	钢丝挡圈	CLIP, PISTON PIN	1	1	/	/	/
	380560056-0001	钢丝挡圈	CLIP, PISTON PIN	/	/	1	1	1



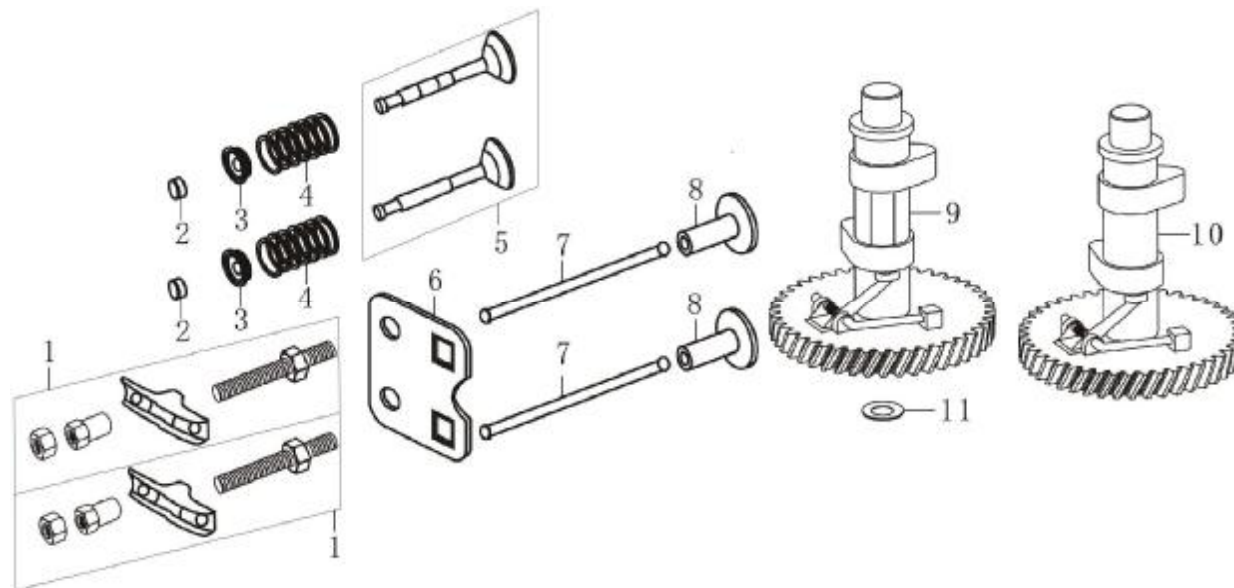
活塞连杆曲轴 (Crankshaft/Piston/connecting rod)

[illegible]



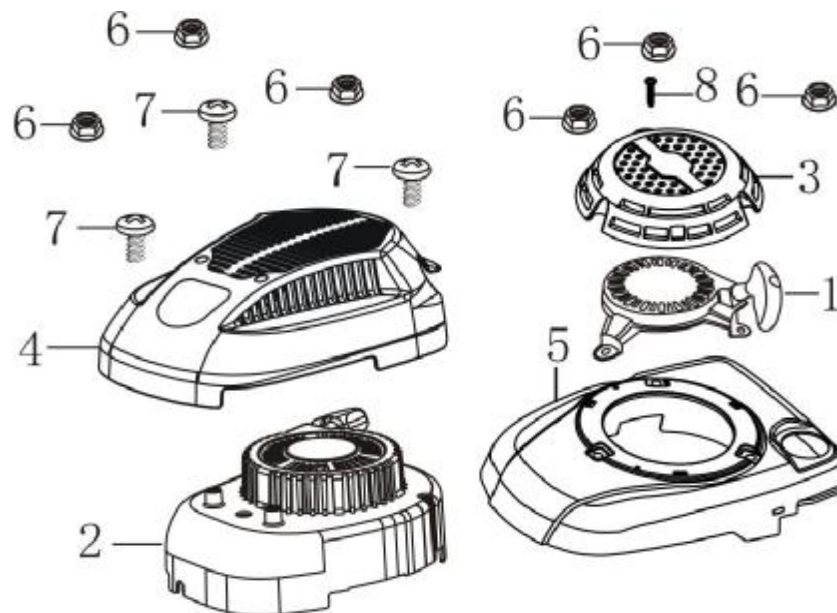
配气机构 (Camshaft)

序号 No.	零部件件号 Part No.	零部件名称	Description	数量 (Reqd. QTY.)				
				1P61FA	1P65FA	1P68FA	1P70FA	1P70F
1	140450022-0001	气门摇臂组合	ARM, VALVE ROCKER	2	2	2	2	2
2	140320001-0001	气门调整帽	RATATOR, VALVE	/	/	2	2	2
3	140380017-0001	气门弹簧座	RETAINER, VALVE SPRING	/	/	2	2	2
	140380020-0001	气门弹簧座	RETAINER, VALVE SPRING	2	2	/	/	/
4	140340022-0001	气门内弹簧	SPRING, VALVE	2	2	2	2	2
5	500550034-0001	气门套件	VALVE ASSY.	1	1	/	/	/
	500550029-0001	气门套件	VALVE ASSY.	/	/	1	1	1
6	140710003-0001	推杆限位板组合	PLATE ASSY	1	1	/	/	/
	140710004-0001	推杆限位板组合	PLATE ASSY	/	/	1	1	1
7	140670013-0001	挺杆组合	ROD, PUSH	2	2	/	/	/
	140670014-0001	挺杆组合	ROD, PUSH	/	/	2	2	2



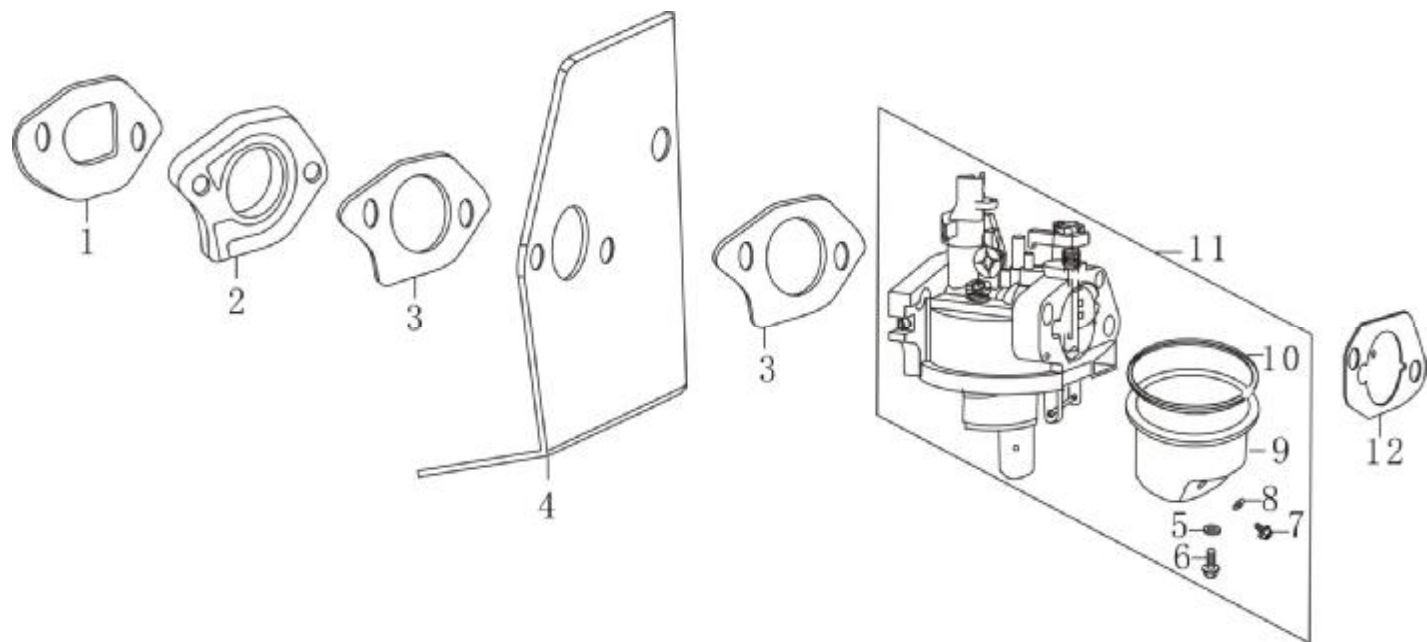
配气机构 (Camshaft)

[illegible]



起动器 (Starter)

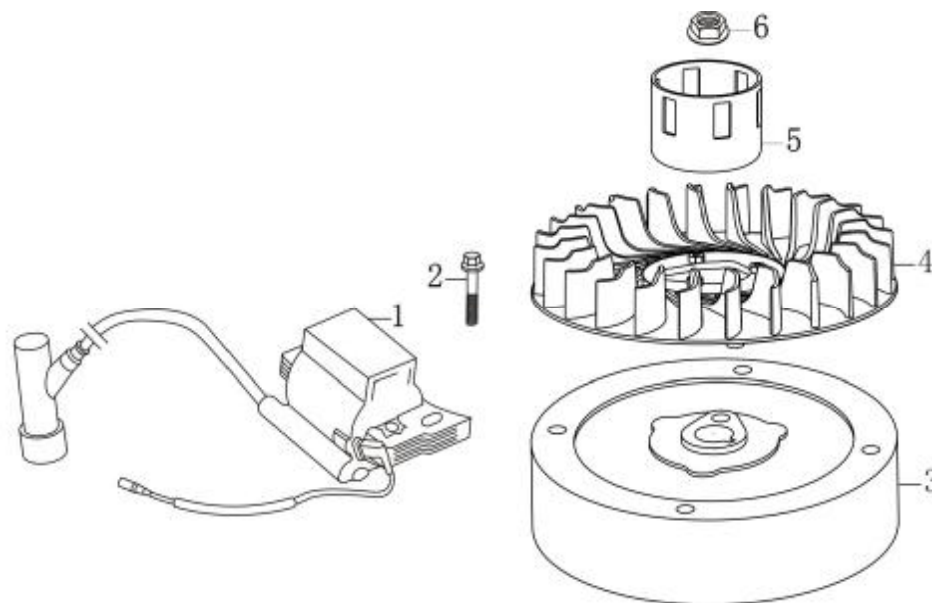
序号 No.	零部件件号 Part No.	零部件名称	Description	数量 (Reqd. QTY.)				
				1P61FA	1P65FA	1P68FA	1P70FA	1P70F
1	193490062-0001	手起动组件	STARTER SUBASSEMBLY	1	1	/	1	1
2	193490094-0001	手起动组件	STARTER SUBASSEMBLY	1	1	/	/	/
	193490095-0001	手起动组件	STARTER SUBASSEMBLY	/	/	1	1	1
3	193690002-0001	起动器装饰罩	HOOD, FAN COVER	1	1	/	/	/
4	193690003-0001	起动器装饰罩	HOOD, FAN COVER	1	1	1	1	1
5	160210022-0004	风扇罩部件	Cover Comp., Pan	1	1	/	/	/
6	380370066-0001	六角法兰面螺母 M6	NUT, FLANGE M6	3	3	3	3	3
7	380200008-0005	十字槽盘头螺钉	SCREW, PAN M4*10	3	3	3	3	3
8	380310135-0001	十字槽盘头自攻螺钉	SCREW	1	1	1	1	1



化油器 (Carburetor)

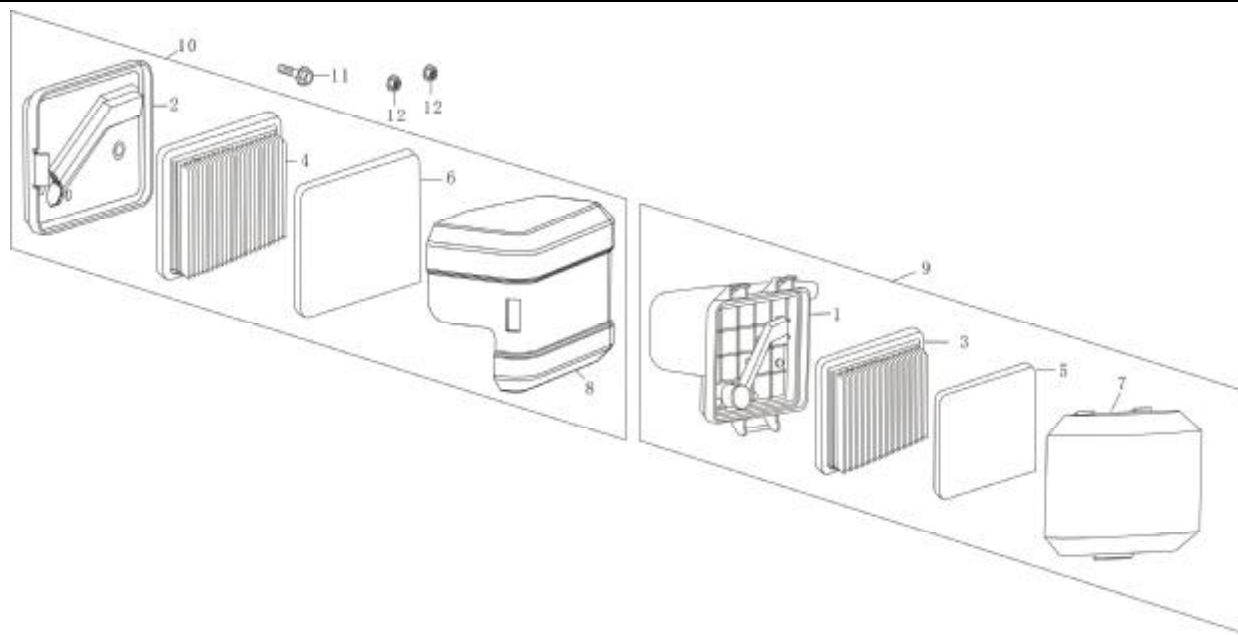
序号 No.	零部件件号 Part No.	零部件名称	Description	数量 (Reqd. QTY.)				
				1P61FA	1P65FA	1P68FA	1P70FA	1P70F
1	170430057-0001	化油器密封垫	PACKING, INSULATOR	1	1	/	/	/
	170430056-0001	化油器密封垫	PACKING, INSULATOR	/	/	1	1	1
2	170440055-0001	化油器隔热垫	INSULATOR, CARBURETOR	1	1	/	/	/
	170440056-0001	化油器隔热垫	INSULATOR, CARBURETOR	/	/	1	1	1
3	170430046-0001	化油器密封垫	PACKING, CARBURETOR	2	2	2	2	2
4	170450001-0001	化油器隔热板	PACKING, CARBURETOR	1	1	1	1	1
5	380450539-0001	平垫圈	GASKET, OIL CUP BOLT	1	1	1	1	1
6	380140353-0001	六角头法兰面螺栓	BOLT, FLANGE	1	1	1	1	1
7	172930001-0001	油杯放油螺塞	DRAIN BOLT	1	1	1	1	1
8	380450577-0001	平垫圈	WASHER	1	1	1	1	1
9	170250021-0002	浮子室	OIL CUP	1	1	1	1	1
10	380840455-0001	密封圈	GASKET, OIL CUP	1	1	1	1	1
11	170020454-0001	化油器	CARBURETOR	1	/	/	/	/

[illegible]



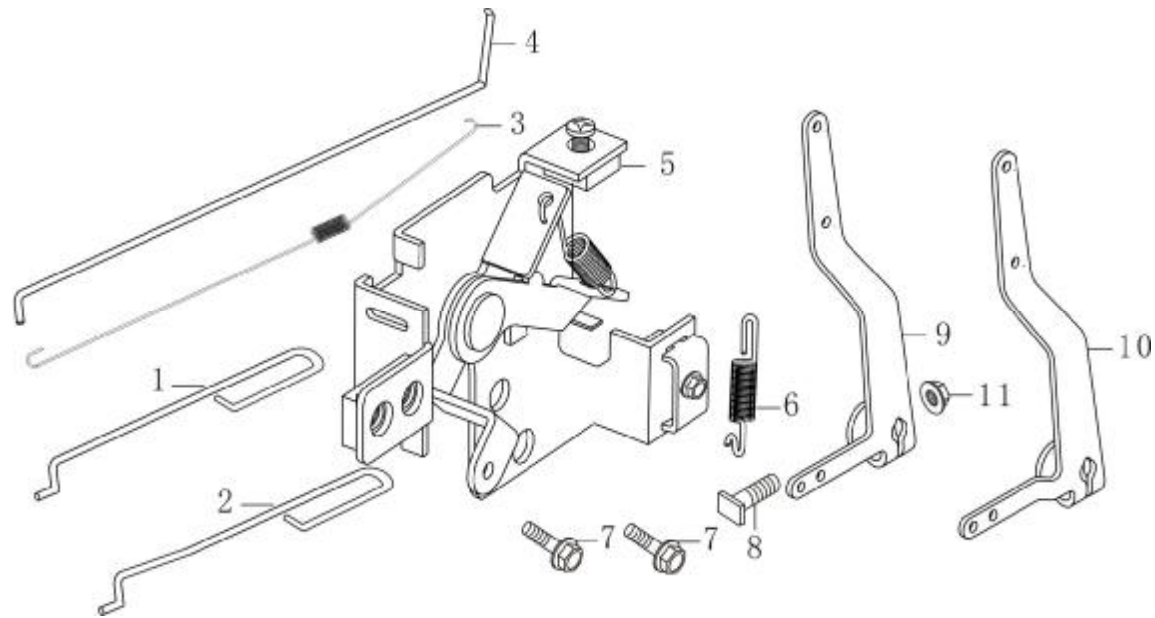
飞轮 点火器 (Flywheel/Ignition Comp)

[illegible]



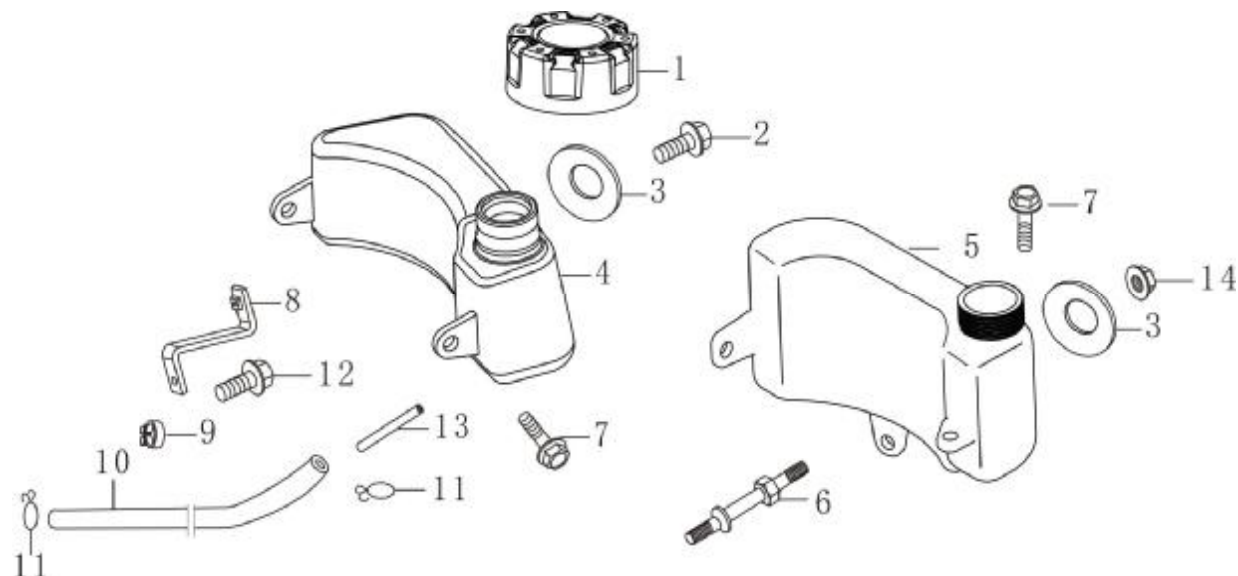
空滤器 (Air cleaner)

序号 No.	零部件件号 Part No.	零部件名称	Description	数量 (Reqd. QTY.)				
				1P61FA	1P65FA	1P68FA	1P70FA	1P70F
1	180280014-0001	空滤器座	ELBOW, COMP AIR CLEANER	1	1	/	/	/
2	180280004-0001	空滤器座	ELBOW, COMP AIR CLEANER	/	/	1	1	1
3	180130178-0001	空滤器滤芯	ELEMENT, AIR CLEANER	1	1	/	/	/
4	180120073-0001	空滤器滤芯骨架	ELEMENT	/	/	1	1	1
5	180130157-0001	空滤器滤芯	FILTER, OUTER	1	1	/	/	/
6	180130144-0001	空滤器滤芯	FILTER, OUTER	/	/	1	1	1
7	180070118-0001	空滤器壳体盖	COVER, AIR CLEANER	1	1	/	/	/
8	180070119-0001	空滤器壳体盖	COVER, AIR CLEANER	/	/	1	1	1
9	180020403-0001	空滤器	AIR CLEANER ASSY	1	1	/	/	/
10	180020335-0001	空滤器	AIR CLEANER ASSY	/	/	1	1	1
11	380140013-0005	六角头法兰面螺栓 M6*16	BOLT, FLANGE M6*16	1	1	1	1	1
12	380370066-0001	六角法兰面螺母 M6	NUT, FLANGE M6	2	2	2	2	2



调速控制 (Control)

序号 No.	零部件件号 Part No.	零部件名称	Description	数量 (Reqd. QTY.)				
				1P61FA	1P65FA	1P68FA	1P70FA	1P70F
1	171650004-0001	阻风门拉杆	ROD, THROTTLE	1	1	/	/	/
2	171650005-0001	阻风门拉杆	ROD, THROTTLE	/	/	1	1	/
	171650002-0001	阻风门拉杆	ROD, THROTTLE	/	/	/	/	1
3	171610003-0001	节气门复位弹簧	SPRING, THROTTLE RETURN	1	1	/	/	/
	171610015-0001	节气门复位弹簧	SPRING, THROTTLE RETURN	/	/	1	1	1
4	171590018-0001	油门拉杆	ROD, GOVERNOR	1	1	/	/	/
	171590015-0001	油门拉杆	ROD, GOVERNOR	/	/	1	1	/
	171590007-0001	油门拉杆	ROD, GOVERNOR	/	/	/	/	1
5	171680038-0001	油门操纵手柄组合	LIFTER, VALVE	1	1	1	1	1
6	171600018-0001	调速弹簧	SPRING, GOVERNOR	1	1	/	/	/
	171600033-0001	调速弹簧	SPRING, GOVERNOR	/	/	1	1	1
7	380140067-0003	六角头法兰面螺栓 M6*12	BOLT, FLANGE M6*12	2	2	2	2	2
8	380250002-0001	方头平端紧定螺钉	BOLT, GOVERNOR ARM	1	1	1	1	1
9	171620015-0001	调速支架	ARM, GOVERNOR	1	1	/	/	/
10	171620016-0001	调速支架	ARM, GOVERNOR	/	/	1	1	1
11	380370048-0001	六角法兰面螺母 M6	NUT, FLANGE M6	1	1	1	1	1



油箱 (Fuel tank)

序号 No.	零部件件号 Part No.	零部件名称	Description	数量 (Reqd. QTY.)				
				1P61FA	1P65FA	1P68FA	1P70FA	1P70F
1	170870094-0001	油箱盖	CAP COMP., FUEL FILLER	1	1	1	1	1
2	380140013-0005	六角头法兰面螺栓 M6*16	BOLT, FLANGE M6*16	1	1	1	1	1
3	380450444-0002	平垫圈 6*25*2	WASHER 6*25*2	1	1	1	1	1
4	170500539-0001	油箱	TANK COMP., FUEL	1	1	1	1	1
5	170500687-0001	油箱	TANK COMP., FUEL	1	1	1	1	1
6	380850003-0001	双头支撑螺栓 6*60	BOLT, STUD 6*60	1	1	1	1	1
7	380140013-0005	六角头法兰面螺栓 M6*16	BOLT, FLANGE M6*16	1	1	1	1	1
8	170650010-0001	油箱支架	HOLDER, FUEL TANK	1	1	1	1	1
9	380930025-0001	定位线卡	LOCATION CABLE CLIP	1	1	1	1	1
10	380750202-0001	油管 5.5*9.5*295	TUBE, FUEL 5.5*9.5*295	1	1	1	1	1
11	380950190-0001	管夹	PIPE CLIP	2	2	2	2	2
12	380140067-0003	六角头法兰面螺栓 M6*12	BOLT, FLANGE M6*12	1	1	1	1	1
13	170010017-0001	燃油滤清器	STRAINER, FUEL	1	1	1	1	1
14	380370048-0001	六角法兰面螺母 M6	NUT, FLANGE M6	1	1	1	1	1



隆鑫通用动力股份有限公司

Loncin motor co., Ltd.

详细地址：重庆市九龙坡区九龙工业园区华龙大道99号

Add: No. 99 Hualong Road, Jiulongpo District, Chongqing, China

Tel: 86 23 8980 5678 / 86 23 8980 8505

Fax: 86 23 8906 7566

Email: service@loncinengine.com

Website: www.loncinengine.com

PRINTED IN CHINA